

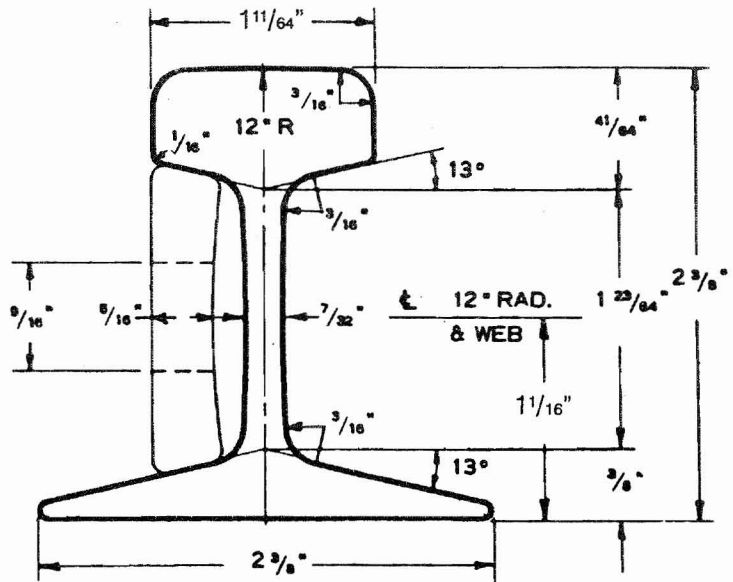
12-lb A.S.C.E.

RAIL—Section 1240

LBS/YD (Nominal)	12.0
TRACK FEET/Net Ton	250.0
NET TONS/Track Mile	21.1
Stock lengths 30'0"	

SPLICE BARS

16 3/8" length 2.9 lbs. per pair



16-lb A.S.C.E.

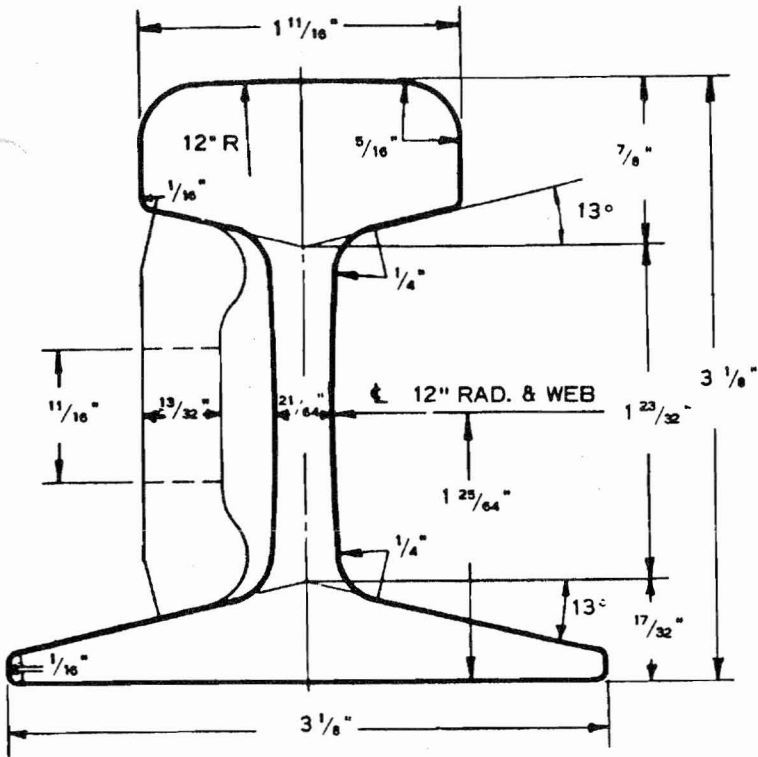
RAIL—Section 1640

LBS/YD (Nominal)	16.0
TRACK FEET/Net Ton	187.5
NET TONS/Track Mile	28.2
Stock lengths 30'0"	

Stock lengths 30'0"

SPLICE BARS

16 3/8" length 3.6 lbs. per pair



30-lb A.S.C.E.

RAIL—Section 3040

LBS/YD (Nominal) 30.0
 TRACK FEET/Net Ton 100.0
 NET TONS/Track Mile 52.8

Stock lengths 30'0"

ANGLE BARS

10.9 lbs. per pair

SPLICE BARS

7.0 lbs. per pair
 16 1/8" length

40-lb A.S.C.E.

RAIL—Section 4040

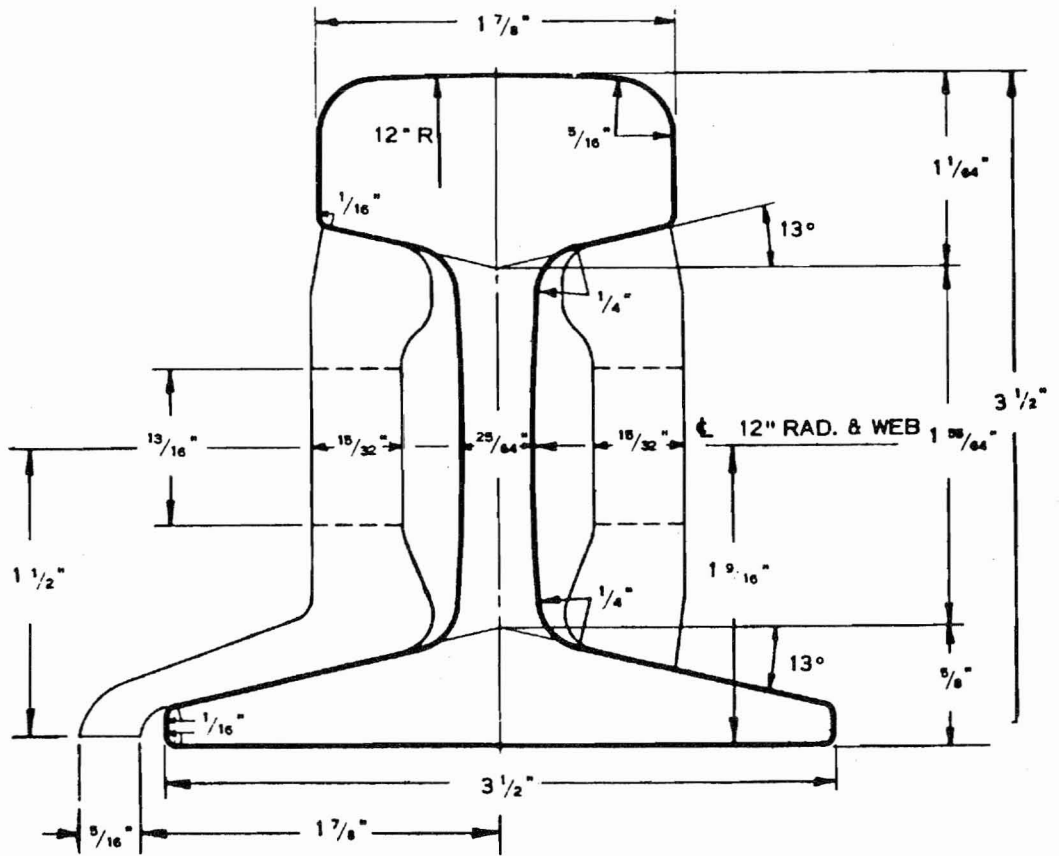
LBS/YD (Nominal) 40.0
 TRACK FEET/Net Ton 75.0
 NET TONS/Track Mile 70.4
 Stock length 30'0"

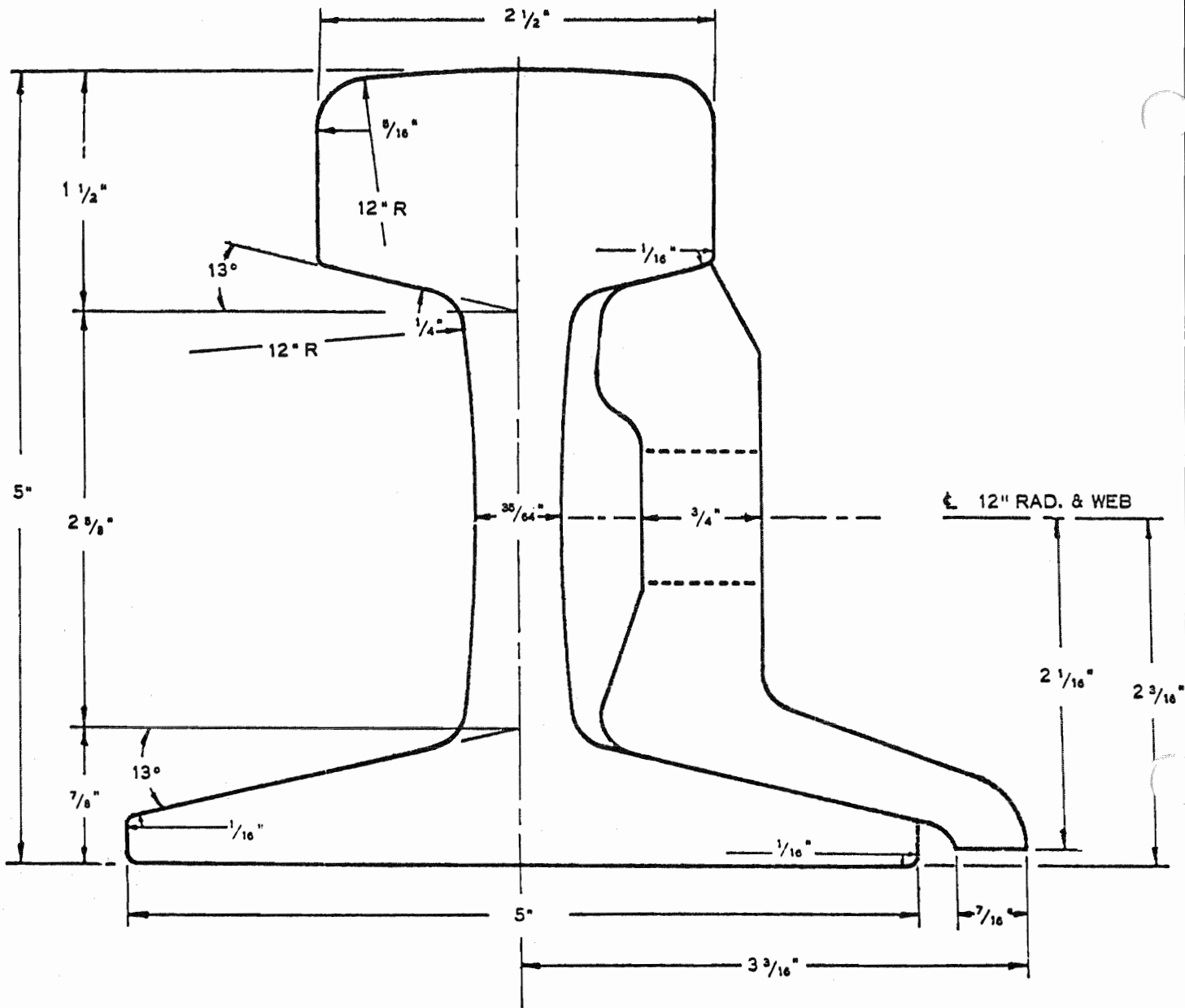
ANGLE BARS

15.2 lbs. per pair

SPLICE BARS

12.0 lbs. per pair 20" length





80-lb A.S.C.E.

SPECIFICATIONS:

RAIL—Section 8040

LBS/YD (Nominal) 80.2

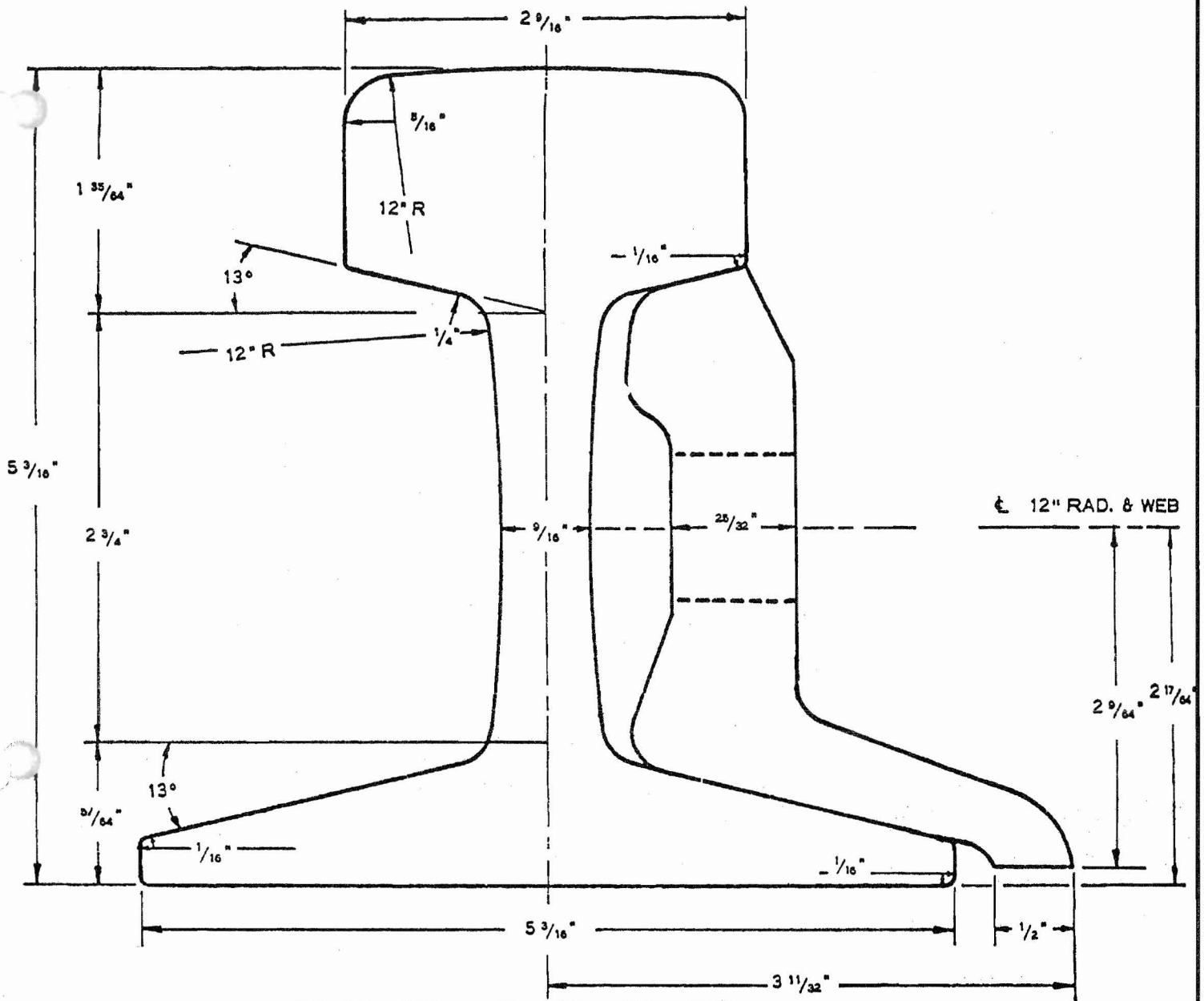
TRACK FEET/Net Ton 37.5

NET TONS/Track Mile 140.8

Stock lengths 33'0" and 39'0"

ANGLE BARS

24" length 46.0 lbs. per pair



85-lb A.S.C.E.

SPECIFICATIONS:

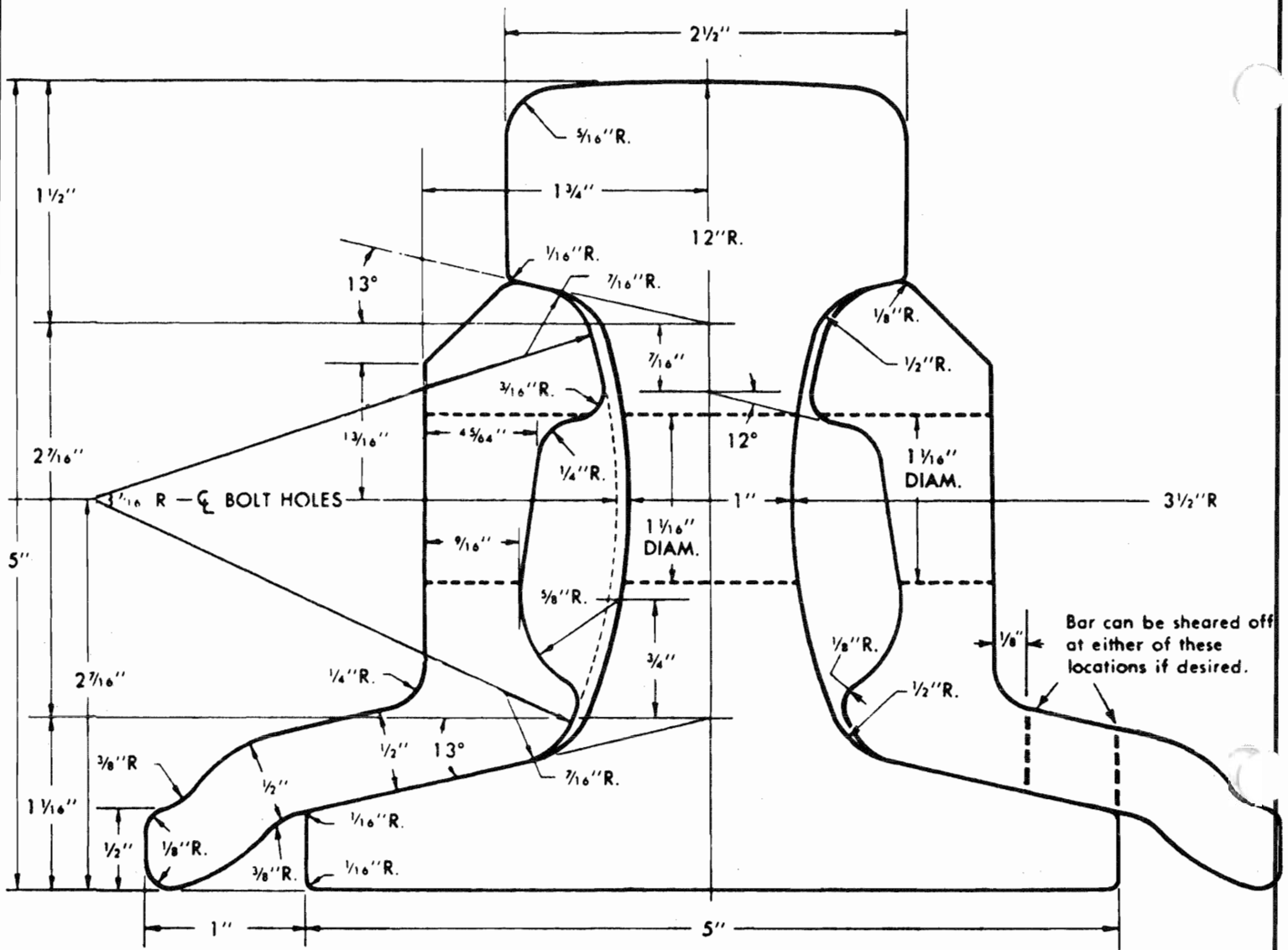
RAIL—Section 8540

LBS/YD (Nominal)	85.0
TRACK FEET/Net Ton	35.3
NET TONS/Track Mile	149.6

Stock length 39'0"

ANGLE BARS

24" length 49.6 lbs. per pair
(Toeless and Headfree bars
also available)



104-lb CRANE RAIL

SPECIFICATIONS:

No. 104 CRANE RAIL

Nominal Wt.—104 lbs. per yard

Stock length 39'0"

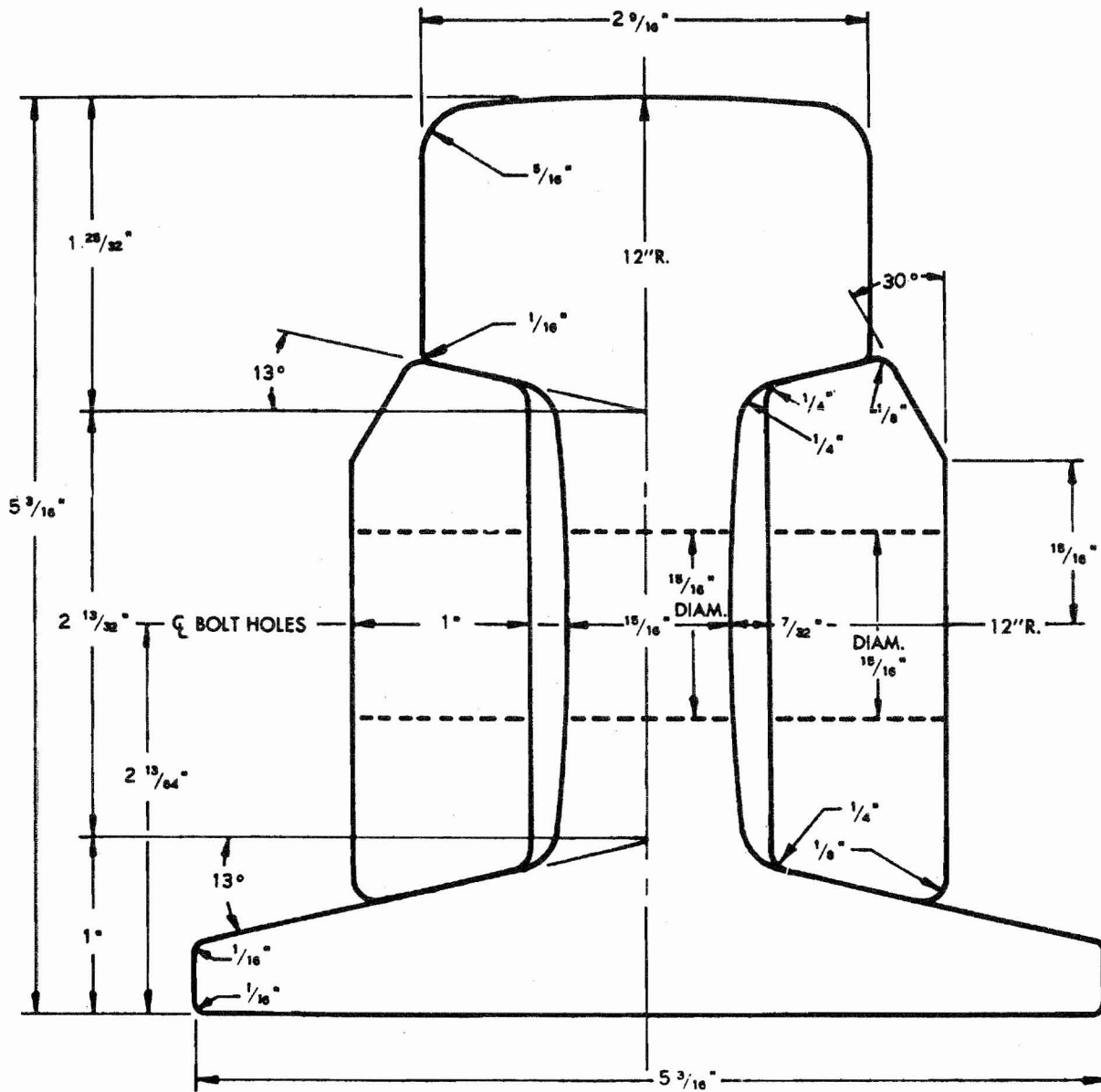
JOINT BARS

34" length 60.2 lbs. per pair

Hex Head Bolts 1" x 5" and

Heavy Hex nuts—Heat Treated

and Heavy Duty Lock Washers



105-lb CRANE RAIL

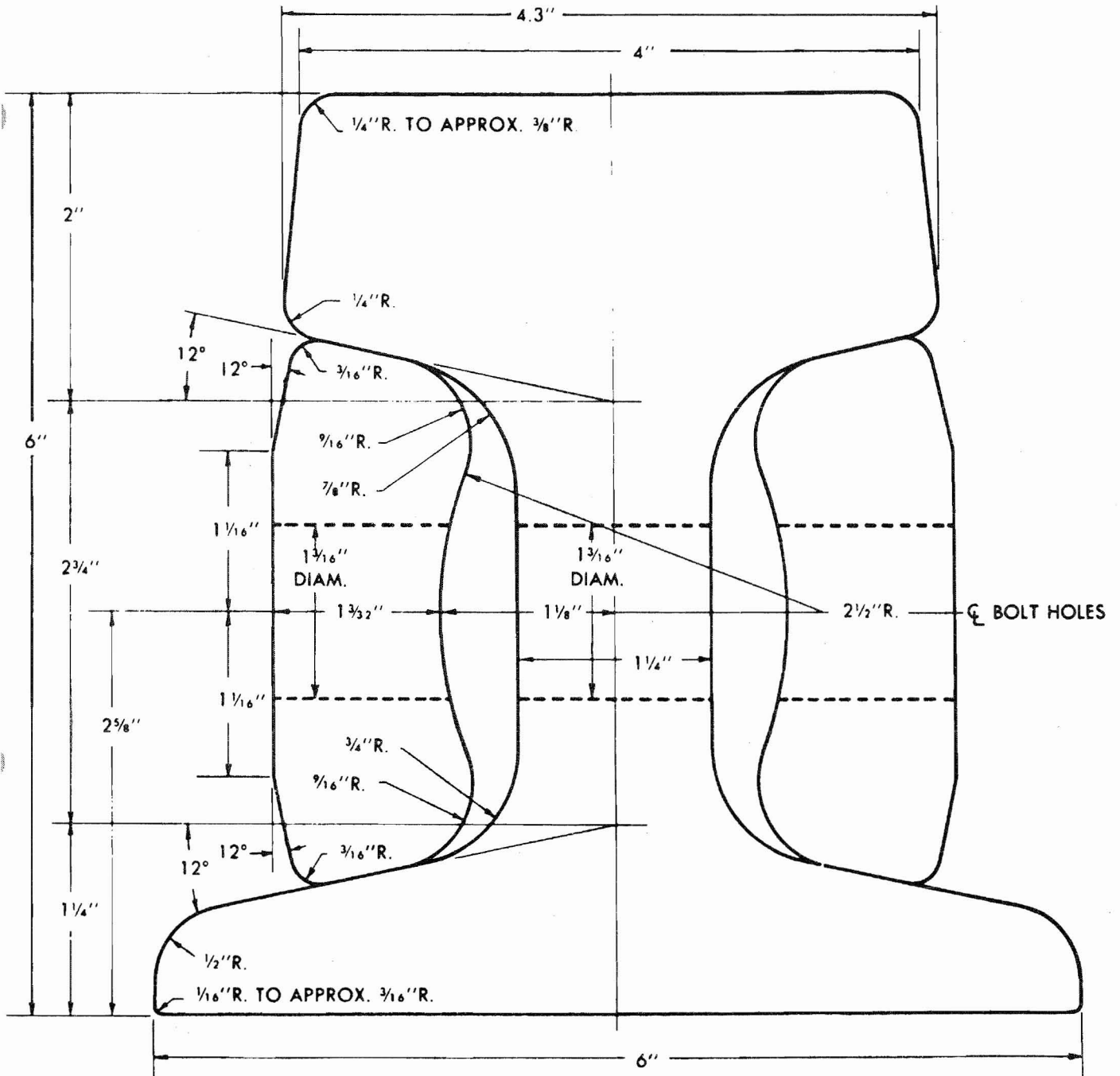
SPECIFICATIONS:

No. 105 CRANE RAIL

Nominal Wt.—105 lbs. per yard
Stock length 39'0"

JOINT BARS

34" length 51.6 lbs. per pair
Hex Head Bolts $\frac{7}{8}$ " x 5" and
Heavy Hex nuts—Heat Treated
and Heavy Duty Lock Washers



171-lb CRANE RAIL

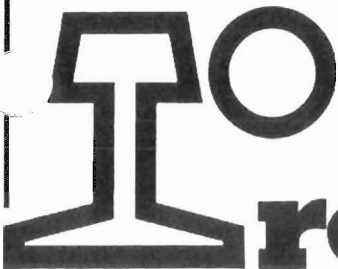
SPECIFICATIONS

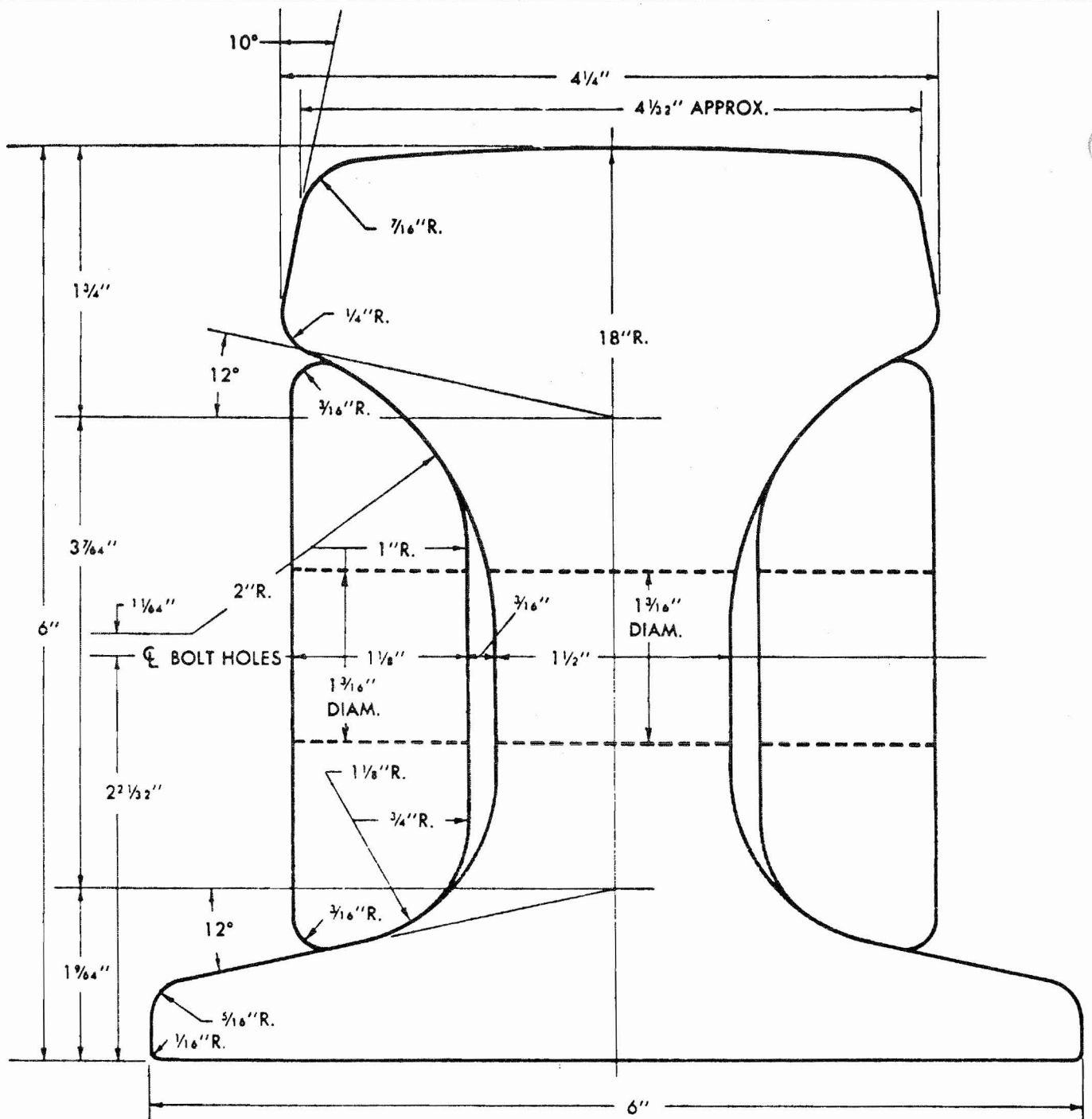
No. 171 CRANE RAIL

Nominal Wt.—171 lbs. per yard
Stock Length 39'0"

JOINT BARS

34" length 72.1 lbs. per pair
Hex Head bolts 1 1/8" x 6" and
Heavy Hex nuts—Heat Treated
and heavy duty Lock Washers





175-lb CRANE RAIL

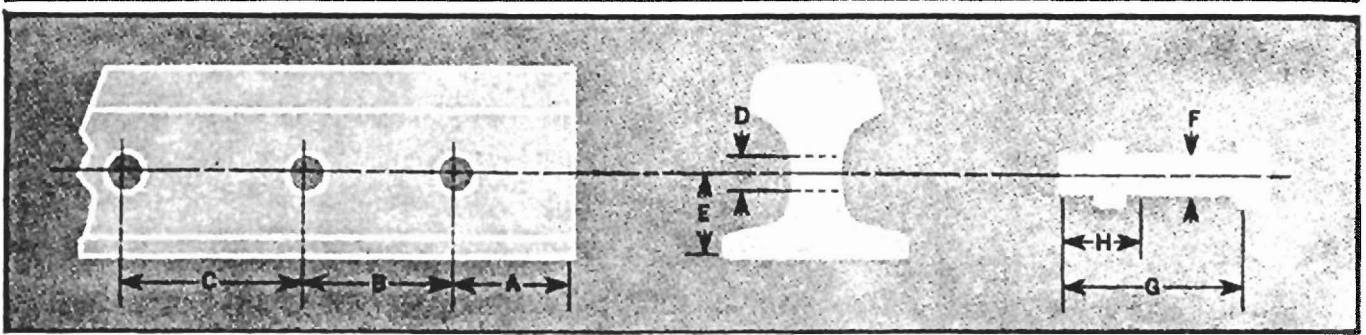
SPECIFICATIONS: No. 175 CRANE RAIL

Nominal Wt.—175 lbs. per yard
Stock Length 39'0"

JOINT BARS

34" length 69.4 lbs. per pair
Hex Head bolts 1 1/8" x 6" and
Heavy Hex Nuts—Heat Treated
and Heavy duty Lock Washers

CRANE RAIL and JOINT BAR DRILLING



STANDARD DRILLING SPECIFICATIONS

All rail can be cut to lengths and drilled to your specifications including the heaviest crane rail sections. For any unusual specifications contact us, we can do it!

CRANE RAIL SECTION	SPACING In.			HOLE DIA. In. D	ELEV. In.		BOLT DIMENSIONS In.		
	A	B	C		E	F	G	H	
104-lb.	4	5	6	1 ¹ / ₁₆	2 ¹ / ₁₆	1	5	2 ¹ / ₄	
105-lb.	4	5	6	1 ⁵ / ₁₆	2 ¹ / ₈	7/8	4 ⁷ / ₈	1 ¹ / ₂	
135-lb.	4	5	6	1 ³ / ₁₆	2 ¹ / ₈	1 ¹ / ₈	5 ¹ / ₂	2 ¹ / ₂	
171-lb.	4	5	6	1 ³ / ₁₆	2 ¹ / ₈	1 ¹ / ₈	6	2 ¹ / ₂	
175-lb.	4	5	6	1 ³ / ₁₆	2 ¹ / ₈	1 ¹ / ₈	6	2 ¹ / ₂	

ROMAR CRANE STOPS

Designed by Romar rail specialists for maximum safety and fast, efficient installation, at lowest cost. Romar Crane Stops are welded and shaped steel plates, prefabricated in sizes to fit all crane rail and "tee" rail sections, and to conform to standard crane wheel diameters. They are easy to handle and install: just fit over the rail, insert filler blocks and bolt through rail web.

Romar stocks all prefabricated components for fast, accurate assembly to your specifications, and for very prompt deliveries. To order, simply specify rail section, elevation of holes above rail base and diameter of crane wheels.



TRACK BOLT SIZE	Average Number Per Keg of 200 Lbs.	**Kegs Per Mile of Track	Weight of R for which us Pounds
1/2" x 1 3/4"	1020	1.4	12-16
1/2" x 2"	990	1.5	20
1/2" x 2 1/2"	880	1.7	25
5/8" x 2 1/2"	520	2.8	30-35
3/4" x 3"	300	4.8	40-45
3/4" x 3 1/4"	285	5.1	50
3/4" x 3 1/2"	280	5.2	60
3/4" x 4"	260	5.0	70-75
7/8" x 4"	178	7.3	80
7/8" x 4 1/2"	169	7.7	85-90
1" x 4 1/2"	122	10.7	90
1" x 5"	113	11.5	90-120
1" x 5 1/2"	110	11.9	90-120
1" x 6"	105	12.4	130
1 1/2 x 6	79	17.82	
1 1/8 x 6 1/2	74	19.03	



LOCK WASHERS or Spring Washers can be furnished from stock in 3/4", 7/8" or 1" sizes in heavy duty carbon steel or alloy steel.

TRACK BOLTS

Standard track bolts are button-head oval-neck design, fitted with square nuts. Bolt head and neck are forged steel with U. S. Standard rolled threads, coarse. Nominal diameter, specified as bolt size, is the over-all thread diameter. Length is measured from under the head to the end of the bolt. Track bolt nuts are commonly manufactured to the American Standard heavy unfinished square design.

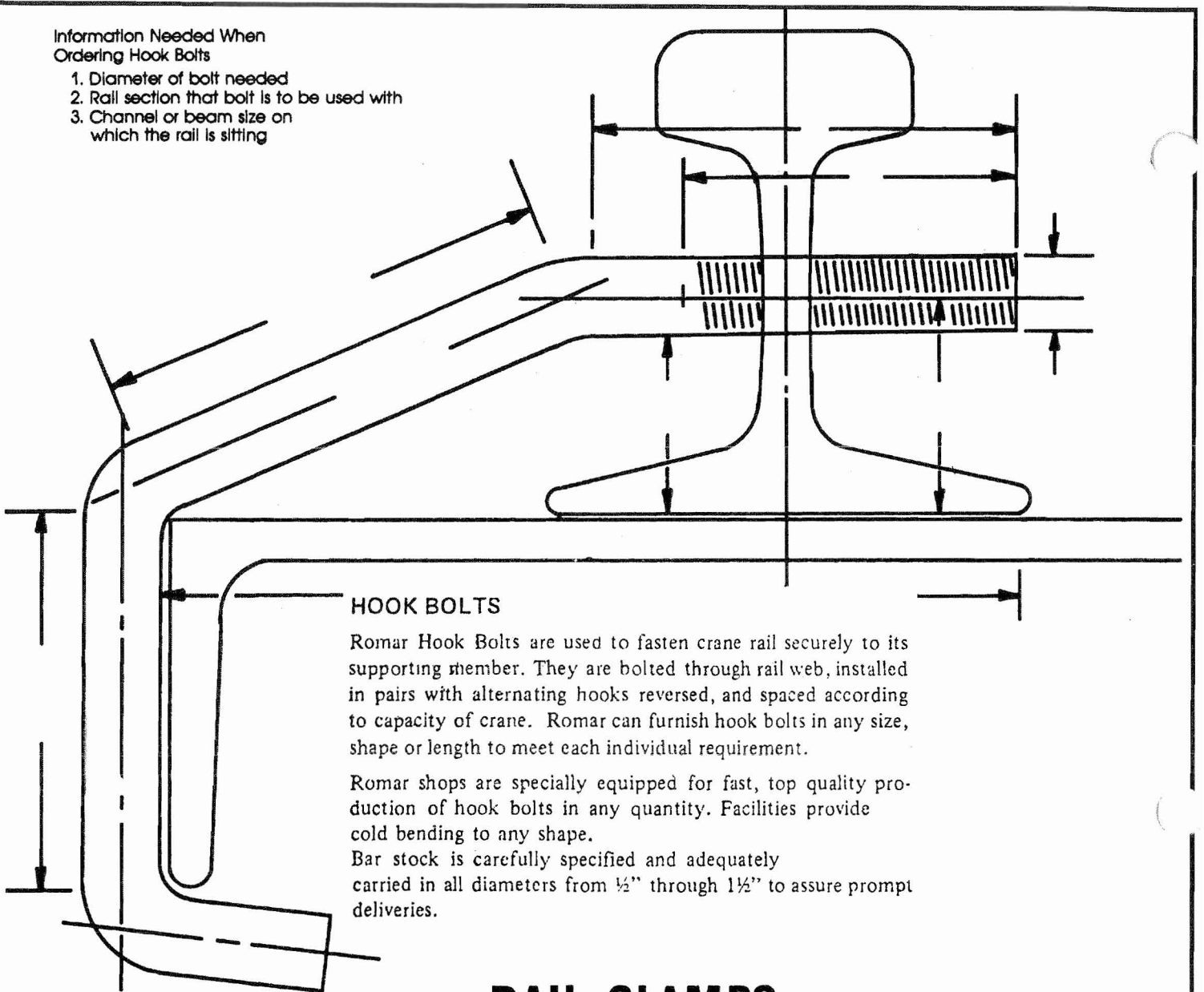
Romar warehouses stock all sizes of track bolts for immediate delivery in any quantities.

Romar can supply all types of bolts to meet every track requirement. Stocks include heat-treated high strength frog bolts, heat-treated machine bolts for crane rail and crane runway applications.



Information Needed When Ordering Hook Bolts

1. Diameter of bolt needed
2. Rail section that bolt is to be used with
3. Channel or beam size on which the rail is sitting



HOOK BOLTS

Romar Hook Bolts are used to fasten crane rail securely to its supporting member. They are bolted through rail web, installed in pairs with alternating hooks reversed, and spaced according to capacity of crane. Romar can furnish hook bolts in any size, shape or length to meet each individual requirement.

Romar shops are specially equipped for fast, top quality production of hook bolts in any quantity. Facilities provide cold bending to any shape.

Bar stock is carefully specified and adequately carried in all diameters from 1/2" through 1 1/2" to assure prompt deliveries.

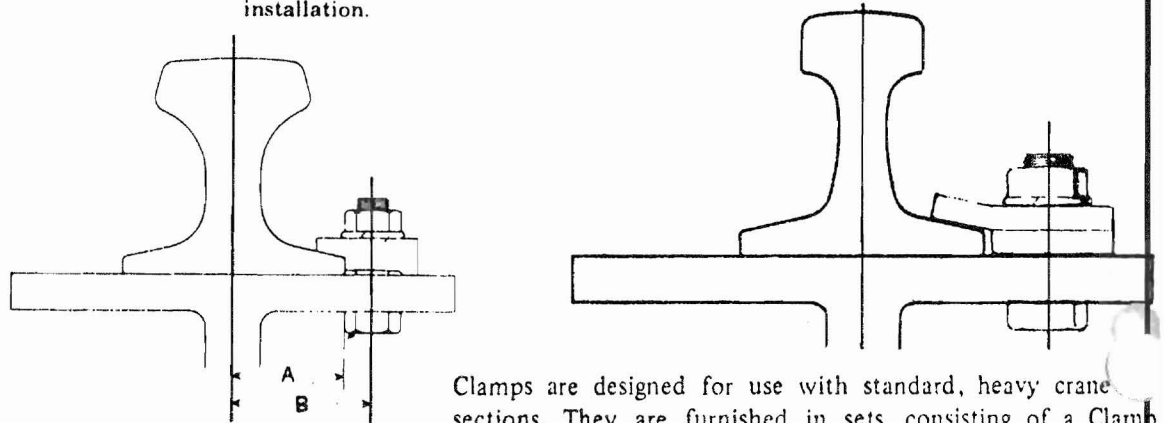
RAIL CLAMPS

Romar Rail Clips are available in 8 designs to conform to the bases of each of the crane rail and "tee" rail sections, and to fasten them securely to the runway girder. They are usually installed in pairs opposite each other, and spaced according to capacity of crane.

PLEASE NOTE:

It is most important to consult your Romar Rail Department for current specifications for rail clips and clamps, to assure proper installation.

Drawings, tables and measurements of clips not originated them, we cannot be responsible for changes in dimensions that may be made. However, all specifications of the manufacturers. Since we have been taken from standard specifications of the manufacturers. Since we have being reliable.

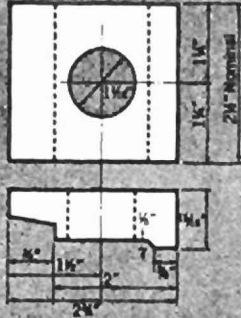


Clamps are designed for use with standard, heavy crane sections. They are furnished in sets, consisting of a Clamp Plate and Filler Plate, installed opposite each other, and spaced according to capacity of crane. In ordering, specify rail section and number of sets required.

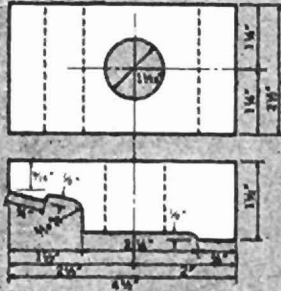
CRANE RAIL CLIPS

**FOR
CRANE
RAIL**

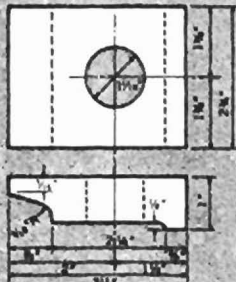
NO. 62



NO. 171

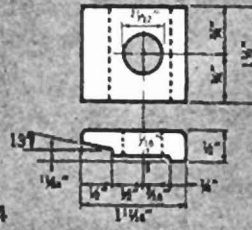


NO. 175

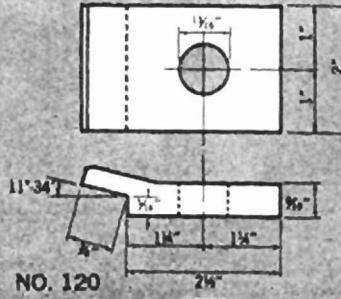


**FOR
TEE
RAIL**

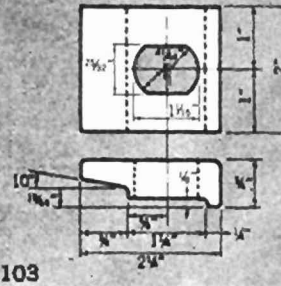
NO. 114



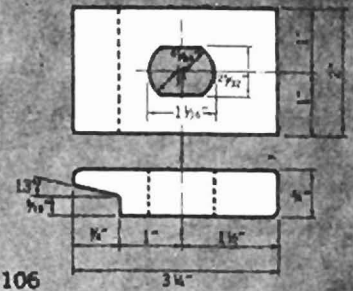
NO. 120



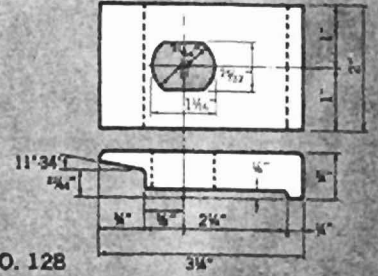
NO. 103



NO. 106



NO. 128



NO. 62

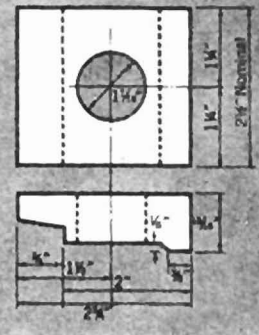


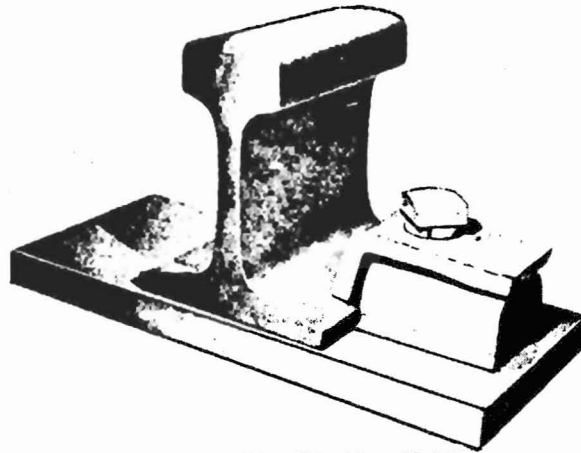
TABLE II RAIL CLIP DIMENSIONS

CLIP NO.	CRANE RAIL SECTION	CENTERLINE RAIL TO:		HOLE DIA.
		A	B	
62	104-lb.	2 1/2"	3 1/4"	1 1/16"
62	105-lb.	2 19/32"	3 1 1/2"	1 1/16"
62	135-lb.	2 19/32"	3 1 1/2"	1 1/16"
171	171-lb.	3"	4"	1 1/16"
175	175-lb.	3"	4 1/8"	1 1/16"

Hole diameter and clip length standard as shown, but may be changed to meet special requirements.

CLIP NO.	STANDARD TEE RAIL SECTIONS	HOLE SIZE
114	12 to 40-lb. ASCE	2 1/32" Dia.
120	25 to 50-lb. ASCE & ARA	13/16" Dia.
103	55 to 100-lb. ASCE	1 1/16" x 25/32"
106	60 to 100-lb. ASCE	1 1/16" x 25/32"
128	60 to 100-lb. ARA-B	1 1/16" x 25/32"
62	115, 131 and 132-lb. AREA	1 1/16" Dia.
62	130-lb. PS	1 1/16" Dia.

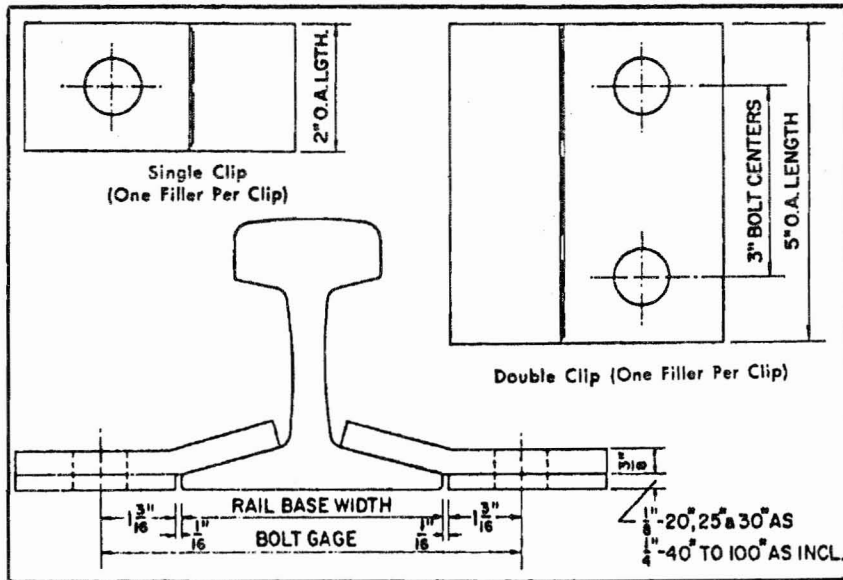
Bolt holes standard as shown, but may be changed for special requirements.



SINGLE CLAMP AND HOLDER No. K-107

These heavy fasteners are used to anchor crane rails to supporting beams. The holder is usually welded to supporting member, but can be bolted when specified. Furnished complete with bolts and lock washers.

Rail Clips with Eccentric Fillers



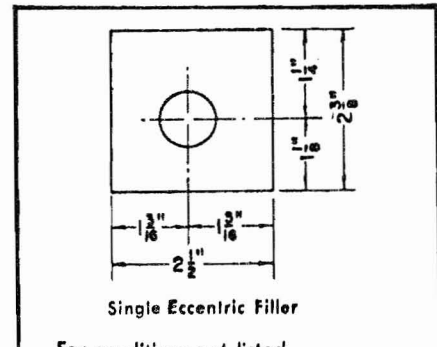
Note:

13/16" Diameter Holes are standard.

Rail Wt.	Bolt Gage	Single Clip No.	Double Clip No.
20#AS	5 1/8"	201	202
25#AS	5 1/4"	251	252
30#AS	5 3/8"	301	302
40#AS	6"	401	402
60#AS	6 3/4"	601	602
70#AS	7 1/8"	701	702
75#AS	7 1/4"	751	752
80#AS	7 1/2"	801	802
85#AS	7 1/4"	851	852
90#AS	7 7/8"	901	902
100#AS	8 1/4"	1001	1002

Clips with eccentric fillers are used where small gage adjustments are required. Through positioning of the eccentric fillers, the adjustment range is 3/16 in.

Both single clips (with one eccentric filler per clip) and double clips (with one filler per clip) are available for rail weights of 20 to 100 lb.

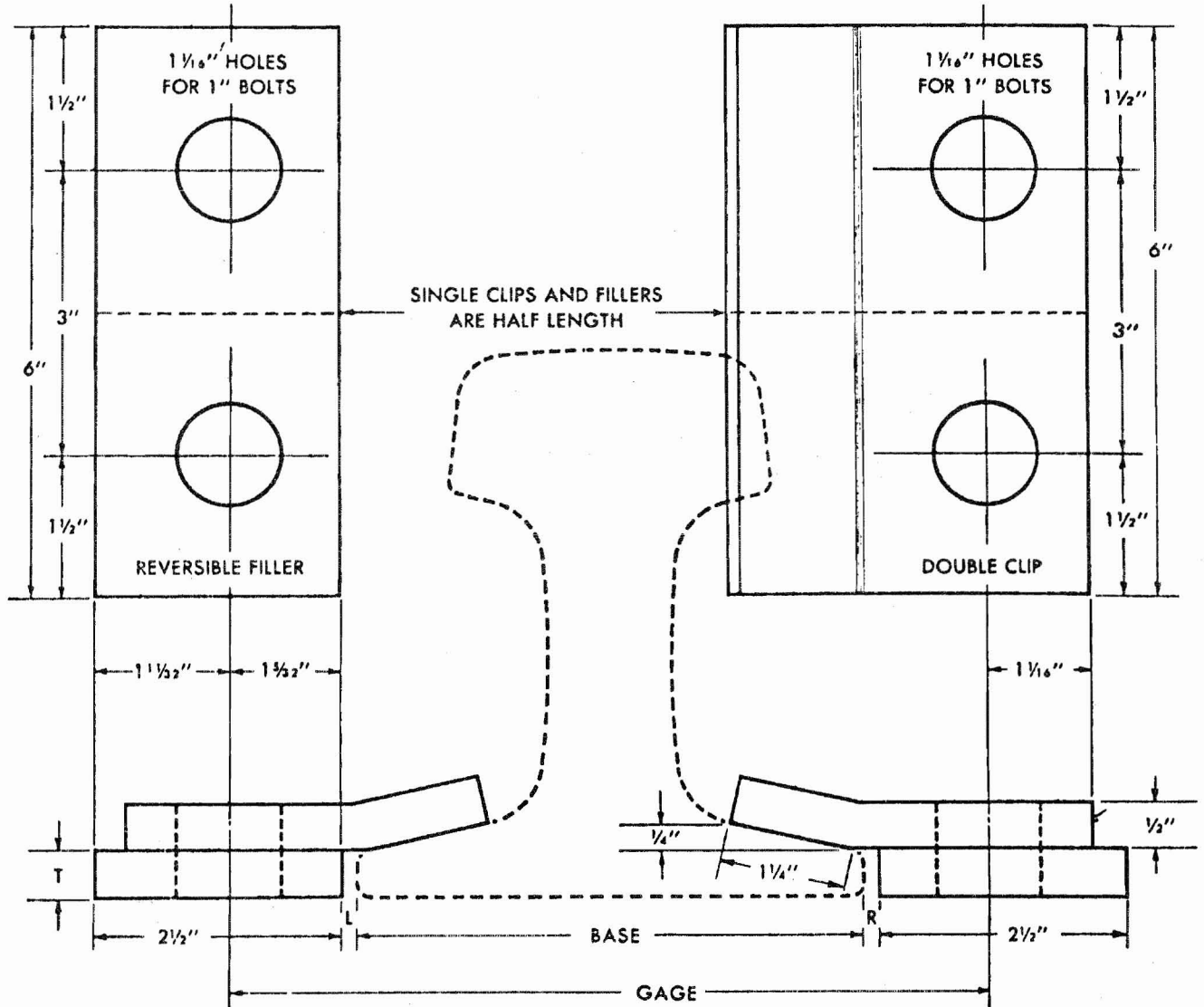


For conditions not listed, please specify:

- Rail weight and section.
- Bolt gage.
- Bolt centers for double clip.
- Bolt size (diameter) or hole size.
- Length of clip.
- If worn rail: width, thickness and taper of rail base.

R-201 single R-202 double

Pressed Clip and Reversible Filler, Tight Fit

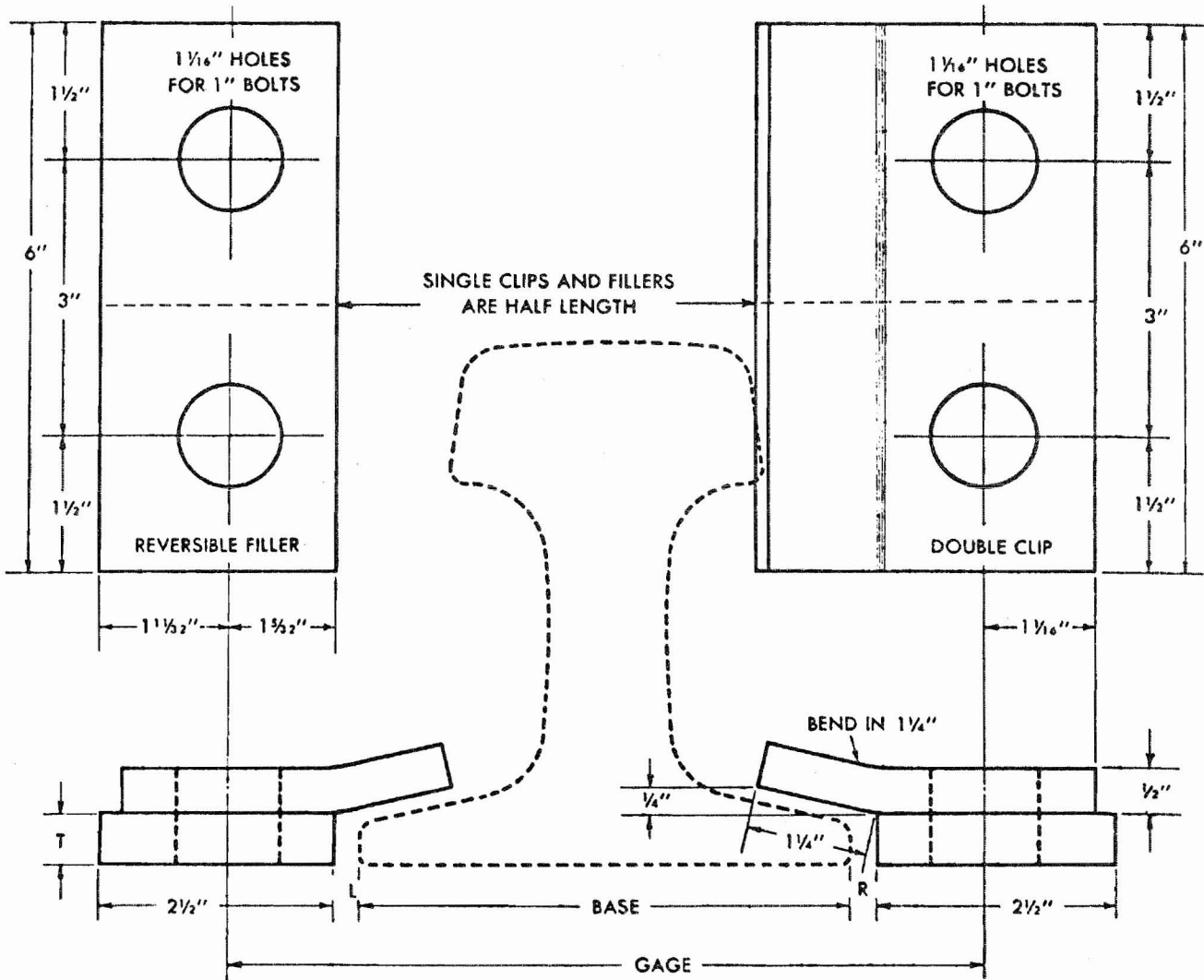


Rail Sec.	Base Width	Gage ϕ to ϕ holes	Filler Thickness T	Est. Wt. Clip		Est. Wt. Filler	
				Single	Double	Single	Double
104-CR	5 in.	7 $\frac{1}{4}$ in.	$\frac{1}{2}$ in.	1.6 lb	3.2 lb	1.05 lb	2.1 lb
135-CR	5 $\frac{5}{8}$ in.	8 in.	$\frac{1}{2}$ in.	1.6 lb	3.2 lb	1.05 lb	2.1 lb
171-CR	6 in.	8 $\frac{3}{4}$ in.	$\frac{3}{8}$ in.	1.6 lb	3.2 lb	1.3 lb	2.6 lb
175-CR	6 in.	8 $\frac{3}{4}$ in.	$\frac{1}{2}$ in.	1.6 lb	3.2 lb	1.05 lb	2.1 lb

NOTE: Clearances L (left) and R (right) can be varied by reversing the filler.

R-301 single R-302 double

Pressed Clip and Reversible Filler, Loose Fit



Rail Sec.	Base Width	Gage ϕ to ϕ holes	Filler Thickness T	Est. Wt. Clip		Est. Wt. Filler	
				Single	Double	Single	Double
104-CR	5 in.	7 3/4 in.	5/8 in.	1.6 lb	3.2 lb	1.3 lb	2.6 lb
135-CR	5 5/8 in.	8 in.	5/8 in.	1.6 lb	3.2 lb	1.3 lb	2.6 lb
171-CR	6 in.	8 3/4 in.	3/4 in.	1.6 lb	3.2 lb	1.6 lb	3.2 lb
175-CR	6 in.	8 3/4 in.	5/8 in.	1.6 lb	3.2 lb	1.3 lb	2.6 lb

NOTE: Clearances L (left) and R (right) can be varied by reversing the filler.